

DUSTY DE ROCKLAND

Race : MAINE COON

Couleur : RED BLOTCHED TABBY

Yeux : OR à VERT

Né(e) le : 23/11/2008

Pedigree N° : LOOF 2009.3574

Sexe : FEMELLE

Identification : 250269602541573

Parents

2e Génération

3e Génération

4e Génération

BORN TO BE WILD DU CLOS DES COUDRIERS
MAINE COON
CREME SILVER MACKEREL TABBY
LOOF 2006.15687

THEO DU MARQUIS DU SAULNOIS
MAINE COON
BLACK SILVER BLOTCHED TABBY
LOOF 2002.7535

DYNAMICATS RED PAPER ROCKETTE
MAINE COON
BROWN MACKEREL TORTIE TABBY & BLANC
NL.FE.L04.MCO.146.1

MASAITANA VAN CLEEF
MAINE COON
BROWN BLOTCHED TABBY & BLANC
LOOF 2004.10023

CHARLESTON DE SKOWHEGAN
MAINE COON
BROWN BLOTCHED TORTIE TABBY
LOOF 2007.7601

TARASACON BROADWAY
MAINE COON
ECAILLE DE TORTUE & BLANC
AAAF 14792

SGC
PHAEBUS DU MOULIN DE CRECY (SUP.GR.CH. RW TICA)
MAINE COON
BROWN BLOTCHED TABBY
LOOF F 235

TUSCALOOSA'S CROWN JEWEL
MAINE COON
BLACK SILVER BLOTCHED TABBY
BDCC 9906191

CH.
RED STONE ROCKET OF COON-CASTLE
MAINE COON
RED BLOTCHED TABBY & BLANC
RVDE 01042876

KUMSKAKA PAPER TIGER
MAINE COON
BROWN MACKEREL TABBY & BLANC
CFF MC1608F1-114496

MASAITANA S'JABARI
MAINE COON
RED BLOTCHED TABBY & BLANC
LOOF 2001.7009

WILLOWPLACE ARUSHA OF MASAITANA
MAINE COON
BROWN BLOTCHED TORTIE TABBY
CFA 1787.1393472

K'BLACK JACK ALWARO
MAINE COON
BROWN BLOTCHED TABBY & BLANC
SHKRP 17625

LIVIA ALWARO
MAINE COON
RED BLOTCHED TABBY
SHKRP 18881

SGC WILLOWPLACE NAUTILUS OF MOULINCRECY (IW)
MAINE COON
BLACK SILVER BLOTCHED TABBY & BLANC SBT 080797 020

APPALACHES LORINA OF MOULIN DE CRECY
MAINE COON
BLACK SILVER BLOTCHED TABBY SBT 073095 017

SGC TUSCALOOSA'S BRAVEHEART, RW
MAINE COON
BROWN BLOTCHED TABBY SBT 070498 001

CH. DEGOONACON COOS BAY O TUSCALOOSA, RW
MAINE COON
BLACK SILVER BLOTCHED TABBY SBT 061497 004

CH. INT. NASCAT'S ARMAGEDDON OF COON CASTLE
MAINE COON
BROWN BLOTCHED TABBY & BLANC

CH. LADY IVANHOE OF COON-CASTLE
MAINE COON
RED BLOTCHED TABBY & BLANC RVDE 01035482

KUMSKAKA SLEEPING AVALANCHE
MAINE COON
BROWN BLOTCHED TABBY & BLANC CFA 1778-1223612

FOUR PAWS SUMMER TIGER
MAINE COON
BROWN MACKEREL TABBY ACA-79530-2

MASAITANA KILIMANDJARO
MAINE COON
BROWN MACKEREL TABBY & BLANC CFA 1778.1138267

WILLOWPLACE MANYARA
MAINE COON
BROWN BLOTCHED TORTIE TABBY & BLANC CFA 1769.1289387

TABBYSKINS SANTA FE OF WILLOWPLACE
MAINE COON
RED SILVER BLOTCHED TABBY CFA 1766.1325068

CH. WILLOWPLACE MAGNIFICENT MAUDE
MAINE COON
BROWN BLOTCHED TABBY CFA 1745.1369148

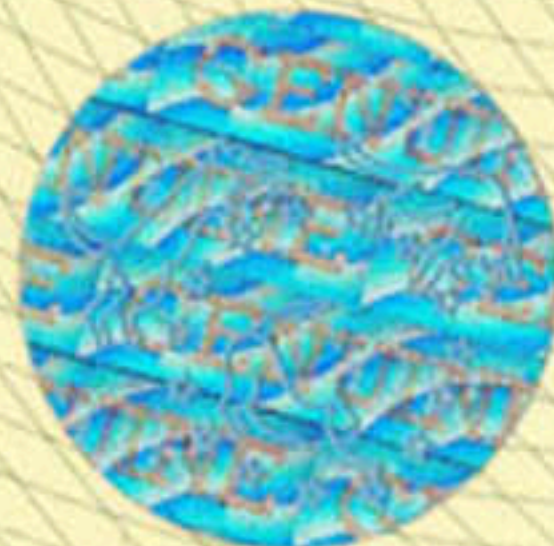
CH. INT. WYTOPITLOCK HBONO MADOX
MAINE COON
BROWN BLOTCHED TABBY & BLANC FD 116128

CH. EUR. K'STAR WINNER ALWARO
MAINE COON
BROWN BLOTCHED TABBY & BLANC SHKPP 10310

CH. EUR. SEBASCOS DAKER DEVITO
MAINE COON
RED BLOTCHED TABBY LO 6195

CH. ATLANTACAT'S KISS ME KATE
MAINE COON
BROWN BLOTCHED TORTIE TABBY & BLANC SHKRP RX 2013

Chatterie
Eleveur
DE ROCKLAND
SODER FREDERIC
12, RUE TACHARD
68790 MORSCHWILLER-LE-BAS



Portée : 6 CHATONS DONT 2 MALES (D'HOOLIGAN, MAINE COON RED BLOTCHED TABBY - DJACK, MAINE COON BROWN BLOTCHED TABBY)
ET 4 FEMELLES (DIADÈM, MAINE COON RED BLOTCHED TABBY - DUSTY, MAINE COON RED BLOTCHED TABBY - DOOTSIE, MAINE
COON CREME SILVER BLOTCHED TABBY - DAÏ-LI, MAINE COON BLACK SILVER BLOTCHED TORTIE TABBY)

Le Président du LOOF,
par délégation

Date d'enregistrement : 16/02/2009

Livre Officiel des Origines Félines

5, rue Regnault 93697 PANTIN Cedex Tel : 01 41 71 03 35

email : technic@loof.asso.fr - www.loof.asso.fr - SIRET 410 757 025 00029 - Code APE 9499Z